

WALDEGRAVE SCHOOL

ENJOY • ACHIEVE • EMPOWER



YEAR 10 KEY INFORMATION MORNING

17 October 2025

Please ensure mobile phone is on 'silent'.

Headteacher: Ms Tongue
Head of Key Stage 4: Mrs Dhir
Head of Year: Mrs Mortimer





Waldegrave
School



**ENJOY ACHIEVE
EMPOWER**

New Website

Loads of information, video content from around school, photos and helpful links.



Great testimonials to watch by students, parents and staff

GCSE Outcomes for 2025

	Waldegrave	<i>(National Avg.)</i>
Grades 7 +	53%	<i>(21.9%)</i>
Grades 5 +	88%	<i>(55.0%)</i>
Grades 4 +	95%	<i>(67.1%)</i>



GCSE Outcomes for 2025

	Waldegrave	(National Avg.)
English Language 4+	95.7%	(70.6%)
Mathematics 4+	97.1%	(71.9%)
5 GCSE grades 4+ inc Eng and Maths	94%	
5 GCSE grades 5+ inc Eng and Maths	80%	



A-Level Outcomes for 2025

11% A*

(National avg. = 9.4%)

42% A* - A

(National avg. = 28.2%)

78% A* - B

(National avg. = 54.9%)

92% A* - C

(National avg. = 77.7%)

Average grade B+



CURRICULUM

Head of Key Stage 4: Mrs Dhir



LEARNING AT WALDEGRAVE

Challenge at
all levels to
reach full
potential

Supporting
Resilience at
GCSE



Respect and
value
learning, each
other and
our
environment



Our Curriculum is delivered through our values

Enjoy

- Passionate subject teachers
- Trips and Enrichment
- Personal development



Empower

- Diverse and inclusive curriculum
- Cultural Capital
- Careers information, advice and guidance

Achieve

- Broad and Balanced
- Early intervention and support
- Stretch and Challenge



Homework and Intervention support

Developing
independent
learners


High standards
and
expectations

Take
responsibility
for learning

Promote
parental
engagement


- Homework assignments are set by subject teachers with specified deadlines and revision activities on google classroom to prepare for GCSE examinations.
 - If you have any concerns please contact the subject teacher and/or Head of Department via KS4@waldegravesch.org
- Our library space is available to students after school to complete work (Mon - Thu until 4pm, Fri until 3.30pm)
- KS4 Revision club with specialist support (Mon - Thu until 4pm, Fri until 3.30pm)
- Intervention programmes






Create your Study Planner
Organise your revision for any deadline or exam. Tell us what you're studying and when you're free to revise. We'll plan out your timetable to help you get those grades.

[Sign up >](#)




Flashcards
Create small cards with questions on the front, answers on the back.

[Create >](#)



Revision Cards
Break topics into manageable chunks to make them easier to learn (A5 size).

[Create >](#)




Revision notes
Share detailed notes on a topic.

[Create >](#)




Quizzes
Create fun, educational quizzes to test yourself and friends.

[Create >](#)



Mindmaps
Create a diagram to chart the relationships within a topic.

[Create >](#)



Crosswords
Create fun crosswords for when you need a break from intense revision.

[Create >](#)

- Set up a personal profile
- Enter exam boards and exam details
- Devise a flexible online revision timetable
- Investigate and practise learning/ revision techniques to help embed knowledge into the long term memory





Guide.

Supporting your child through their GCSEs

GCSE examinations can be daunting for students. Here's how you can help them.

[Read guide](#)



Guide.

Parents guide to GCSE revision

This useful guide lets you know exactly how and when your child should be revising.

[Read guide](#)



Guide.

Parents Quick Start Guide

Discover what Access GCSEPod is, how you can get it and key features.

[Read guide](#)



Guide.

Parent Toolkit

This toolkit is designed to help you support your child in using GCSEPod at home.

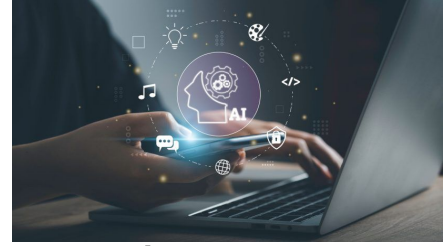
[Read guide](#)



Use of AI - Parent Information



The ever-changing world of AI



- AI is here and increasingly prevalent in the modern world.
- Many students are far more up to date with the use of AI tools than staff and/or parents/carers are.
- We need to strike the correct balance between educating our students on the use of AI, keeping them safe, ensuring that they are using AI tools in the correct way, and prepare them for the future world of work as best we are able to.
- We are working closely with Turing House and Orleans Park to ensure consistency of approach across schools in the local area.



How will students use AI?

- Students will be taught about the ethical considerations around AI in PDC lessons in Year 7 - these lessons will be offline lessons in a classroom.
- Students will be taught how AI tools work in computing lessons in Year 8.
- **The use of AI tools and issues around plagiarism:**
 - Students agree that they are NOT permitted to use AI tools to support with a piece of work unless they have been told that they can.
 - Students may ASK a teacher if they are permitted to use AI.
 - ALL use of AI tools must be referenced - **TRANSPARENCY**.



How will staff use AI?

- Staff are encouraged to use AI tools to reduce their workload (*e.g. support with lesson planning, producing quizzes, revision activities, admin etc.*).
- Staff are clear that they must maintain oversight - there is always a human being in control.
- Staff will be **TRANSPARENT** around the use of AI.
- Staff will ensure that no personal or private data is shared with AI models.
- If students wish to use AI tools staff will attempt to support this if possible.



Key Principles:

- Safety is the top priority
- AI is a great tool - needs human oversight
- Transparency



E Safety

smoothwall

- As part of our commitment to ensuring that we do all we can to keep our children safe online, the school uses monitoring software called Smoothwall.
- The software is linked to students' profiles and works both in school and at home on school managed devices.
- It supports students to enjoy their digital lives by monitoring the search/viewing information.
- The software flags the school if it identifies there is a potential risk of harm to students, allowing us to follow up promptly and act on any concerns.
- Filtering at school is through our firewall, just like at home via parental WiFi settings.



Careers Information and Guidance Advice

- We have a comprehensive series of assemblies, talks and subject fairs involving staff, external visitors and our Year 12 students to support and guide students during Year 10
- One to one careers meetings will start in the summer term and will continue into Next academic year
- All Y10 Waldegrave students have the enriching opportunity of work experience



Student Voice



Very important to the ethos of the school

There will be one representative in the full student parliament from each form group in Years 7-11. This student will be assigned to one of the sub committees below.

1. Environmental working party
2. Community
3. Curriculum
4. Canteen/Healthy Schools
5. Equality, Diversity and Inclusion

They will meet regularly and work towards a priority area



Fundraising

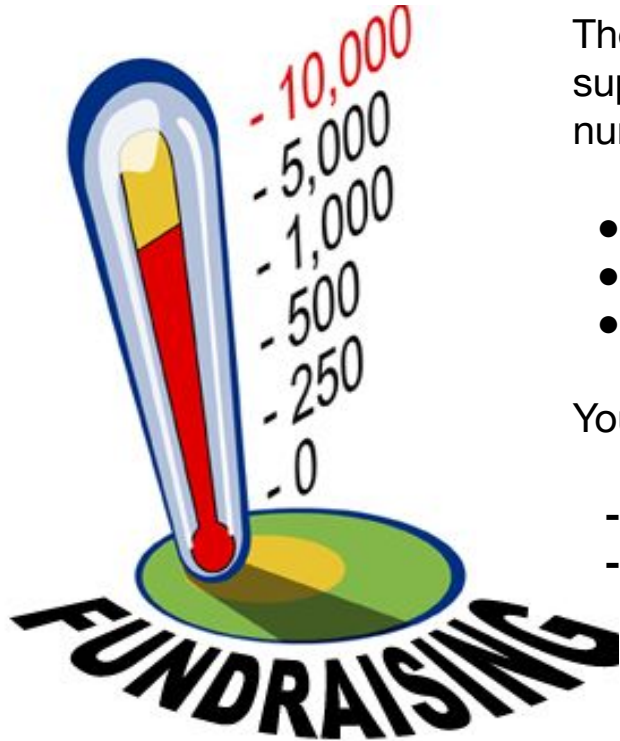


The school raise funds through parental donations that are vital to supporting our students experience in school. These are used in a number of ways:

- Significant capital improvements
- Enriching curriculum for students and parents & carers
- Financial support

Your help would be much appreciated if you can support us:

- **Regular donations** £15, £30 etc per month -
- **One off donations** - use this button on front page of website



STANDARDS & SUPPORT

Head of Year 10: Mrs Mortimer



High Expectations

Everyone enjoys learning, feels valued, and experiences success

Enjoy, Achieve, Empower



**Positive approach
to school life**



Attendance



Punctuality



**Uniform - lanyards,
jewellery**



The Year 10 Pastoral Team



Mrs Mortimer: Head of Year



Mrs Dhir: Head of Key Stage 4



Ms French 10EFR



Ms Cortes Sanchez 10FCO



Ms O' Rorke 10POR



Ms Ansell 10SAN



Ms Murphy 10EMU



Mr Doan 10FDO



Ms Wallace 10PWA



Mrs Sreerama 10SSR

ATTENDANCE MATTERS



The link between attendance and attainment in an assessment year

Research Report
March 2025

- Students with an attendance between 95-100% were 1.9 times more likely to achieve a Grade 5 in English and Maths compared to those whose attendance was between 90-95%
- Small improvements in attendance had a substantial impact on attainment
- There are five full terms before the exam season begins, every day in school counts



Resources to support students and families



What to do in a crisis...

If you are known to Richmond CAMHS, please call **0203 513 3238** to speak to a duty clinician (Monday-Friday; 9-5; Excluding Bank Holidays)

SLP CAMHS crisis line: **0203 228 5980**
Monday to Sunday 9am to 11pm, 365 days per year

Outside these hours - SWLSTG Mental Health Support Line:
0800 028 8000 or **NHS 111** (24/7)

Young people and Families should call 999 or attend their nearest A&E for urgent or emergency medical attention.

Other support available...



24/7 crisis text support for times when you need immediate assistance.
Text **SHOUT** to **85258**



Listen to how you're feeling, 24/7 support.
Call **116 123** or email jo@samaritans.org.uk



Support for young people struggling with thoughts of suicide or for anyone worried about a young person. 9am - midnight 365 days a year.
Call **0800 068 3131** or text **07860 039967**



Free confidential support for young people under 25.
Call **0808 808 4994**



Confidential counselling service.
Call **0800 1111** (webchat available on: www.childline.org.uk)



Portus

[Preventing self-harm and suicide in young people :: Portus](#)

Young Minds parent helpline

[Parents Helpline | Mental Health Help for Your Child | YoungMinds](#)



Achieving for Children - Mental Health and Emotional wellbeing

The infographic is set against a light blue background. On the left, under the heading 'Fixed mindset', is a teal silhouette of a head in profile facing right. Inside the head is a teal padlock icon. To the right of this head is another teal silhouette of a head in profile facing left. Inside this second head is a teal pot with a small green plant growing out of it. The text is arranged in columns around these two heads.

Fixed mindset

- I'll never be that smart
- I want to avoid making mistakes
- I know best
- I give up
- This is good enough

Growth mindset

- Feedback is valuable
- Mistakes help me learn
- I improve with practice
- I won't give up
- Is this my best work?

humaninsight



Achieving for Children - Mental Health and Emotional Wellbeing



**'Helping teens with...'
Webinars for parents 2025/26**



- Worries and anxiety
- Digital wellbeing
- Understanding changes in the adolescent brain
- Exam anxiety
- Friendship difficulties
- Self esteem
- Low mood and depressive feelings



Key Dates

Event	Date
Year 10 Information morning	17 October 2025
Year 10 monitoring	November 2025
Year 10 Parent consultation evening	6 May 2026
Year 10 end of year assessments	June 2026 (provisional 15/6 - 26/6)
Year 10 monitoring	July 2026
Year 10 work related learning and careers	Throughout the year



WALDEGRAVE SCHOOL

ENJOY • ACHIEVE • EMPOWER

Thank you for listening.
Our Y10 tutors will now
collect you for the next
session

