

WALDEGRAVE SCHOOL

ENJOY • ACHIEVE • EMPOWER



YEAR 11 KEY INFORMATION EVENING

16 September 2025

Please ensure mobile phone is on 'silent'.
Please sign the register.

Headteacher: Ms Tongue
Deputy Headteacher: Mr Goulbourne
Head of Year: Mrs Porteous
Head of Key Stage 4: Mrs Dhir





**ENJOY ACHIEVE
EMPOWER**

New Website

Loads of information, video content from around school, photos and helpful links.



Great testimonials to watch by students, parents and staff

GCSE Outcomes for 2025

	Waldegrave	(National Avg.)
Grades 7 +	53%	(21.9%)
Grades 5 +	87%	(55.0%)
Grades 4 +	95%	(67.1%)



GCSE Outcomes for 2025

	Waldegrave	(National Avg.)
English Language 4+	95.7%	(70.6%)
Mathematics 4+	97.1%	(71.9%)
5 GCSE grades 4+ inc Eng and Maths	94%	
5 GCSE grades 5+ inc Eng and Maths	80%	



A-Level Outcomes for 2025

11% A*

(National avg. = 9.4%)

42% A* - A

(National avg. = 28.2%)

78% A* - B

(National avg. = 54.9%)

92% A* - C

(National avg. = 77.7%)

Average grade B+



CURRICULUM

Head of Key Stage 4: Mrs Dhir



LEARNING AT WALDEGRAVE



**Building knowledge
and understanding
steadily**



**Enquiring through
questioning**



**Assessing for
learning**



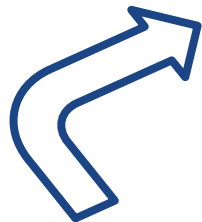
Reviewing



Our Curriculum is delivered through our values

Enjoy

- Passionate subject teachers
- Trips and Enrichment
- Personal development



Empower

- Diverse and inclusive curriculum
- Cultural Capital
- Careers information, advice and guidance

Achieve

- Broad and Balanced
- Early intervention and support
- Stretch and Challenge



English Language

HoD - Ms Nowicki

GCSE Eng Lang Course overview

AQA GCSE English Language
8700

School Support (and enrichment opportunities)	Parental support	Resources
<ul style="list-style-type: none">• Targeted intervention pre-mocks• After November mocks, we will spend 2 lessons a week revising Language.• All resources uploaded onto Google classroom• Easter revision• Passionate subject specialist team	<ul style="list-style-type: none">• Support memorising timings for exam: Language GCSE timings• Share articles in magazines/newspapers and discuss these - opinion pieces from newspapers are often in Paper 2.• Spelling, punctuation and grammar are worth 20%: support with proofreading / editing / memorising spellings of frequently used words your child finds challenging• Encourage your child to read fiction for pleasure, and, ideally, discuss their reading with them.	<p>Google Classroom</p> <p>GCSEPod</p> <p>GCSE English Language - AQA - BBC Bitesize</p> <p>AQA revision textbooks</p> <p>AQA revision snap guides</p> <p>Mr Bruff - revision videos on You tube</p>

English Literature

HoD - Ms Nowicki

GCSE Literature Course Outline

AQA GCSE English Literature (8702)


School Support (and enrichment opportunities)	Parental support	Resources
<ul style="list-style-type: none">• After November mocks, we will spend 2 lessons a week revising Language.• Lunchtime book club - stretch and challenge• Visiting theatre company productions of Shakespeare texts• All resources uploaded onto Google classroom• Easter revision• Passionate subject specialist team	<ul style="list-style-type: none">• Support with memorising quotations e.g. quick quiz• Watch adaptations of set texts together; look for theatre opportunities e.g. A Christmas Carol this autumn• Any reading that they choose for themselves and enjoy is great!	<p>Google Classroom</p> <p>GCSEPod - short videos on set texts</p> <p>AQA revision textbooks</p> <p>AQA revision snap guides</p> <p>Mr Bruff - revision videos on you tube</p>

Mathematics

HoD - Ms Dodd

Y11 Timeline GCSE

Pearson GCSE Mathematics

School Support (and enrichment opportunities)	Parental support	Resources
<ul style="list-style-type: none">• Thursday lunchtime“STUCK SHOP” in C1 with HoD• Lesson resources shared on Google classroom• Online learning resources access• Targeted revision in lessons pre mocks• Intervention - students identified post mocks• Easter revision• Passionate subject specialist team• Competitions and trips eg Maths Olympiad	<ul style="list-style-type: none">• Numeracy modelling wherever possible• Positive reinforcement around maths ability eg “you can do this!”• Monitoring of completion of mathswatch activities and Dr Frost homeworks to ensure that homework is completed to the best of their ability• Ensure that students are ready with correct equipment• Encourage attendance at STUCK SHOP in order to receive extra help	<ul style="list-style-type: none">• Students will have individual logins to Mathswatch, Dr Frost Maths and Active Learn (online textbook)• www.mathsgenie.co.uk• www.1stclassmaths.com• www.examq.co.uk  <p>Equipment Needed for EVERY lesson:</p>

Science

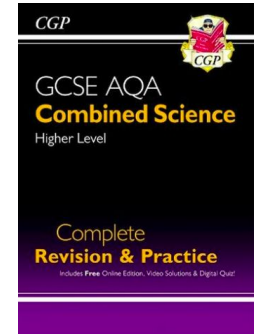
HoD - Mr Allen

Science learning plans

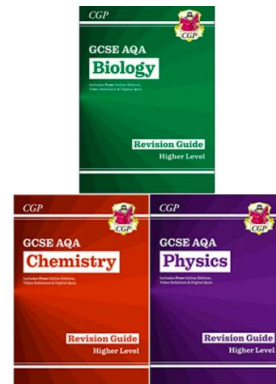
Combined science specification (AQA)
Biology (triple) specification (AQA)
Chemistry (triple) specification (AQA)
Physics(triple) specification (AQA)

School Support (and enrichment opportunities)	Parental support	Resources
<ul style="list-style-type: none"> Intervention - students identified post mock exams. Students are encouraged to ask their teachers for support. Lesson resources are shared on Google Classroom Easter revision Passionate subject specialist team Guest speakers, competitions (if applicable) 	<ul style="list-style-type: none"> Prevent subject avoidance, sometimes parents say 'I hated Science...' Point out aspects of science in the real world Ask what is currently being taught in lessons Share articles in magazines/newspapers and discuss these Homework completed to the best of their ability Refrain from discussions on tiers of entry to reduce stress in science 	<p>BBC bitesize - summarised content, videos and quizzes</p> <p>FreeScienceLessons - video explanations</p> <p>Physicsandmathstutor - mindmaps, keywords, past paper questions</p> <p>Kerboodle textbooks</p> <p>Seneca - quizzes and content reviews</p> <p>Savemyexams - mindmaps, keywords, past paper questions</p> <p>Revision guides (as seen)</p>

Combined science



Triple sciences

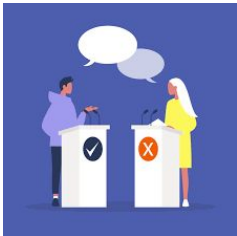
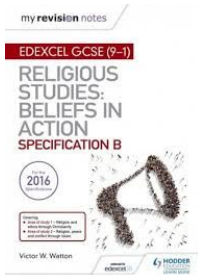


Religious, Philosophy and Ethics

HoD - Ms Hanson

[GCSE Religious Studies Course Outline](#)

[Edexcel GCSE \(9-1\) Religious Studies B: Specification Issue 2](#)

School Support including enrichment opportunities	Parental support	Resources
<ul style="list-style-type: none"> • Lunchtime support sessions on Tuesdays • Targeted intervention pre-mocks/ mock revision sessions. • All resources uploaded onto Google classroom and VLE • Passionate subject specialist team • Other enrichment activities e.g. speakers and trips. 	<ul style="list-style-type: none"> • Discuss and debate with your child at home. • Share articles in magazines/newspapers and discuss these. • Support organisation, revision and homework. 	<ul style="list-style-type: none"> • Google Classroom and student VLE (lesson resources and exam materials) • Revision Guides. We recommend 'My Revision Notes' Edexcel GCSE Religious Studies: Beliefs in Action Specification B • Ben Wardle- revision videos on YouTube. 

Homework and Intervention support

Developing
independent
learners

High standards
and
expectations

Take
responsibility
for learning

Promote
parental
engagement

- Homework assignments are set by subject teachers with specified deadlines and revision activities on google classroom to prepare for GCSE examinations.
 - If you have any concerns please contact the subject teacher and/or Head of Department via KS4@waldegravesch.org
- Our library space is available to students after school to complete work (Mon - Thu until 4pm, Fri until 3.30pm)
- KS4 Revision club with specialist support (Mon - Thu until 4pm, Fri until 3.30pm)
- Intervention programmes



Subject Withdrawal and Access Arrangements

- Subject withdrawal will not be considered for students who are underperforming; support strategies are available which will be explored.
- Access arrangements are provided in exceptional circumstances where a student has a recognised diagnosed need
- JCQ guidelines are very clear about the qualifications and quality of specialist's reports. The report must meet regulatory body standards and can advise on difficulties.
- JCQ state clearly it is the decision of the SENCO with regards to awarding an access arrangement.
- An access arrangement is a 'normal' way of working for the child so we would expect the child to be known by the Inclusion team or Safeguarding team



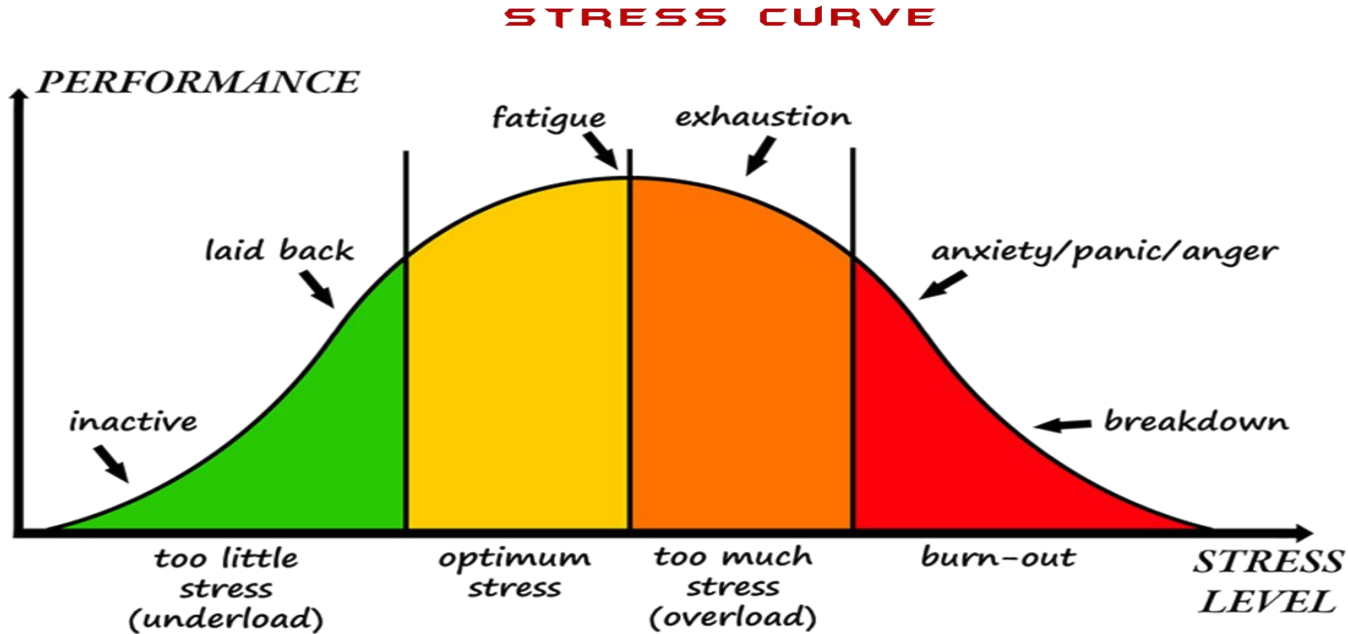
Exams and Revision

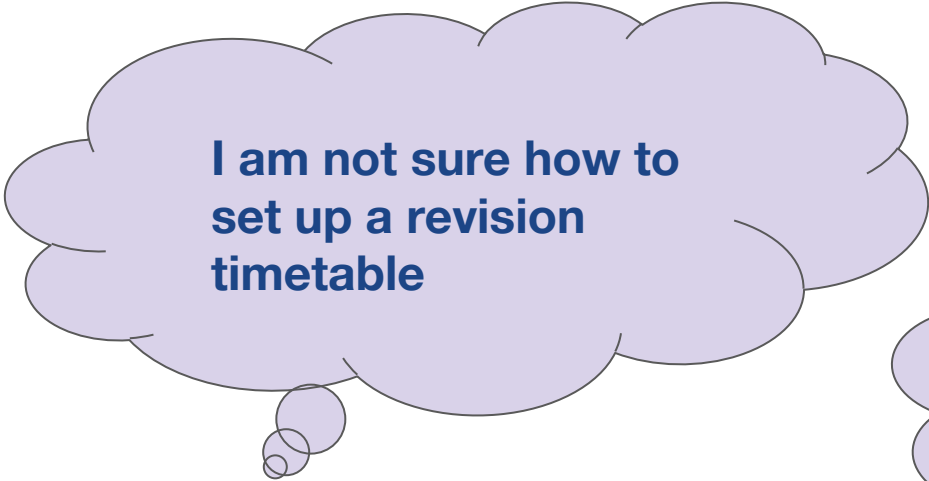
This is an important and exciting year for both you and your child, so you need to be prepared.

We all need to work together and model resilience to lead to.....

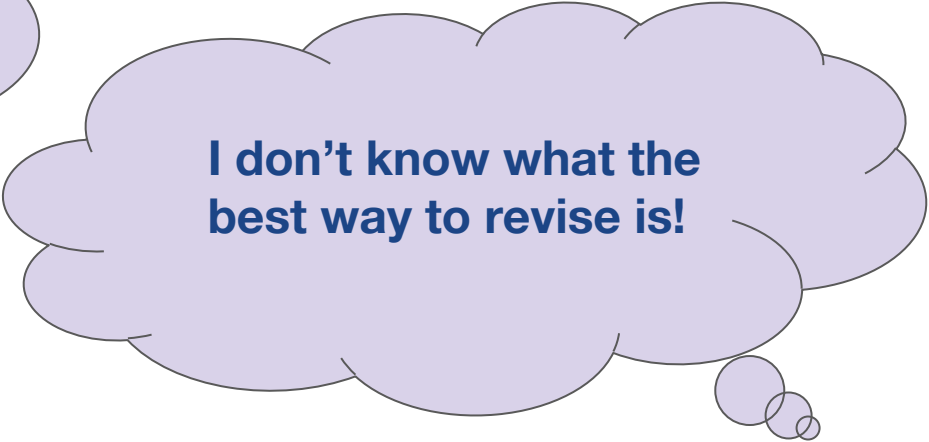


Keeping a balance





**I am not sure how to
set up a revision
timetable**



**I don't know what the
best way to revise is!**

- Subject teacher support
- Year 11 Drop Down Day focused on exam preparation skills for students - **Wednesday 15 October**
- Yr11 Exam revision workshop for parents at **17.00-18.15pm Wednesday 15 October**
- Tutor time programme



Fundraising

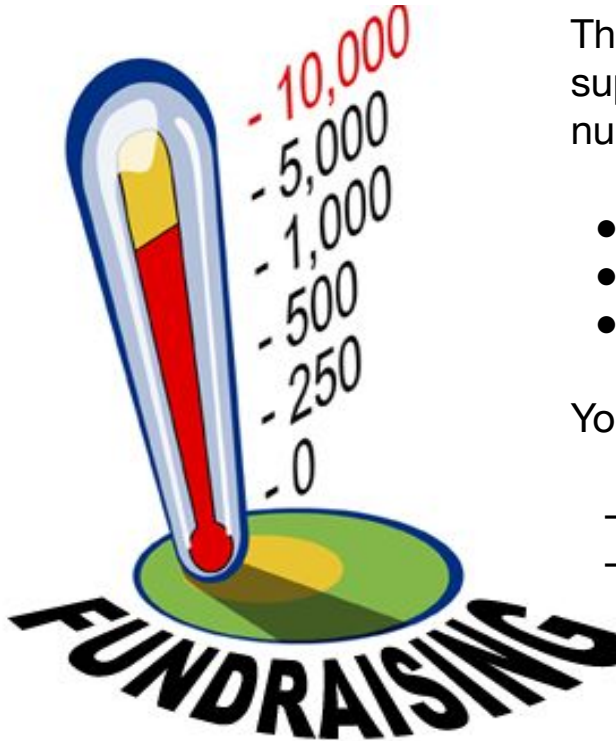


The school raise funds through parental donations that are vital to supporting our students experience in school. These are used in a number of ways:

- Significant capital improvements
- Enriching curriculum for students and parents & carers
- Financial support

Your help would be much appreciated if you can support us:

- **Regular donations** £15, £30 etc per month -
- **One off donations** - use this button on front page of website





Create your Study Planner

Organise your revision for any deadline or exam. Tell us what you're studying and when you're free to revise. We'll plan out your timetable to help you get those grades.

[Sign up >](#)



Flashcards

Create small cards with questions on the front, answers on the back.

[Create >](#)



Revision Cards

Break topics into manageable chunks to make them easier to learn (A5 size).

[Create >](#)



Revision notes

Share detailed notes on a topic.

[Create >](#)



Quizzes

Create fun, educational quizzes to test yourself and friends.

[Create >](#)



Mindmaps

Create a diagram to chart the relationships within a topic.

[Create >](#)



Crosswords

Create fun crosswords for when you need a break from intense revision.

[Create >](#)

- Set up a personal profile
- Enter exam boards and exam details
- Devise a flexible online revision timetable
- Investigate and practise learning/ revision techniques to help embed knowledge into the long term memory



[Access GCSEPod revision and support resources for parents](#)



Supporting your child through their GCSEs

GCSE examinations can be daunting for students. Here's how you can help them.

[Read guide](#)



Parents guide to GCSE revision

This useful guide lets you know exactly how and when your child should be revising.

[Read guide](#)



Parents Quick Start Guide

Discover what Access GCSEPod is, how you can get it and key features.

[Read guide](#)



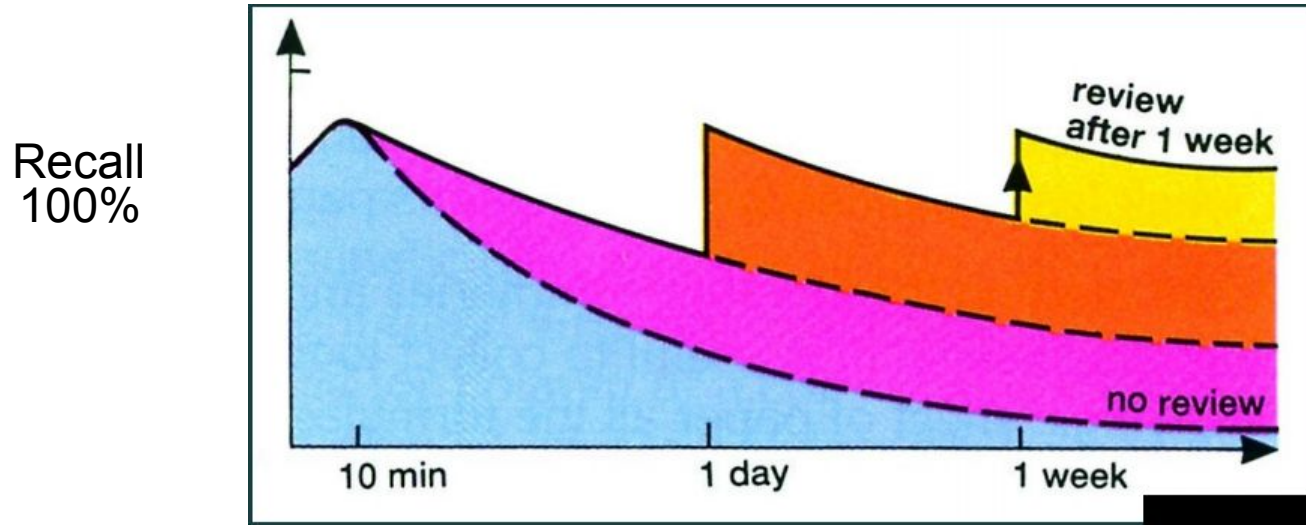
Parent Toolkit

This toolkit is designed to help you support your child in using GCSEPod at home.

[Read guide](#)



Reviewing Regularly Improves Recall



REVISE

REVIEW

REPEAT



Careers Information and Guidance Advice



- We have had a comprehensive series of assemblies, talks and subject fairs involving staff, external visitors and our Year 12 students to support and guide students during Year 10
- One to one careers meetings have been taking place last year and will continue this term
- It is important to apply to a minimum of two but preferably three different post 16 providers
- All Waldegrave students have a conditional offer (entry requirements of our Sixth form must be met, 5 GCSEs grade 4-9 inc English and Maths, and the individual criteria of subjects)
- Sixth form Open evening **Thursday 16 October 2025**



STANDARDS & SUPPORT

Head of Year 11: Mrs Porteous



High Expectations

Everyone enjoys learning, feels valued, and experiences success

Enjoy, Achieve, Empower



**Positive approach
to school life**



Attendance



Punctuality



**Uniform - lanyards,
jewellery**



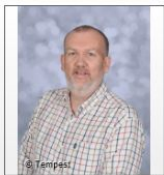
The Year 11 Pastoral Team



Mrs Porteous: Head of Year



Mrs Dhir: Head of Key Stage 4



Mr Jones 11EJO



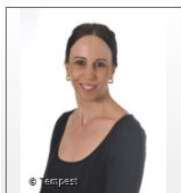
Mrs Green 11FGR



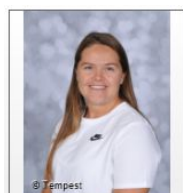
Mr Godfrey 11PGO



Ms Pipe 11SPI



Ms Rustam 11ERU



Ms G Wood 11FWD



Ms Guy 11PGU



Mrs Treharne 11STH

ATTENDANCE MATTERS



The link between attendance and attainment in an assessment year

Research Report
March 2025

- Students with an attendance between 95-100% were 1.9 times more likely to achieve a Grade 5 in English and Maths compared to those whose attendance was between 90-95%
- Small improvements in attendance had a substantial impact on attainment
- There are two full terms before the exam season begins, every day in school counts



KS4 Hub

Support for Students

- Attendance
- Uniform
- Lost property
- Medical issues & first aid
- Meet with outside agencies
- Observe and Listen



Ms Bolbol



Ms Clarke-Greenfield



Ms Ghawte



Ms Hughes

Contact: ks4@waldegravesch.org



Safeguarding

All adults in schools have a responsibility for **safeguarding**

- Ms Moore is the designated safeguarding lead and Ms Williams and Ms Dale are the deputy designated safeguarding leads
- We have a **safeguarding and child protection policy** which is updated annually
- We have school counsellors, a school nurse and a KS4 academic and behaviour mentor to provide additional support
- All staff are trained and know the procedures for reporting concerns
- Pastoral staff work with parents and outside agencies to try to put the right support in place for all students. These include CAMHS, MHST, Early Help team, Children's social care

Please remember as part of our safeguarding measures we do not allow students to share toilet cubicles for any reason.



Ms Moore



Ms Williams



Ms Dale



Resources to support students and families



What to do in a crisis...

If you are known to Richmond CAMHS, please call **0203 513 3238** to speak to a duty clinician (Monday-Friday; 9-5; Excluding Bank Holidays)

SLP CAMHS crisis line: **0203 228 5980**
Monday to Sunday 9am to 11pm, 365 days per year

Outside these hours - SWLSTG Mental Health Support Line:
0800 028 8000 or **NHS 111** (24/7)

Young people and Families should call 999 or attend their nearest A&E for urgent or emergency medical attention.

Other support available...



24/7 crisis text support for times when you need immediate assistance.
Text **SHOUT** to **85258**



Listen to how you're feeling. 24/7 support.
Call **116 123** or email jo@samaritans.org.uk



Support for young people struggling with thoughts of suicide or for anyone worried about a young person. 9am - midnight 365 days a year.
Call **0800 068 3131** or text **07860 039967**



Free confidential support for young people under 25.
Call **0808 808 4994**



Confidential counselling service.
Call **0800 1111** (webchat available on: www.childline.org.uk)



Portus

[Preventing self-harm and suicide in young people :: Portus](#)

Young Minds parent helpline

[Parents Helpline | Mental Health Help for Your Child | YoungMinds](#)





- Mental health concerns have been our prevailing safeguarding need for a number of years.
- We have been working, as a school, with the local Safeguarding Children Partnership, CAMHS, NHS commissioning bodies and Public Health around issues of social contagion of self-harm and suicidal ideation.
- **It is a proactive approach to supporting students' wellbeing that has been clinically approved**
- Regular use has been shown to measurably improve young people's wellbeing
- It is another early intervention tool that we can signpost students to - and we know that early intervention is key



Achieving for Children - Mental Health and Emotional wellbeing



Achieving for Children - Mental Health and Emotional Wellbeing

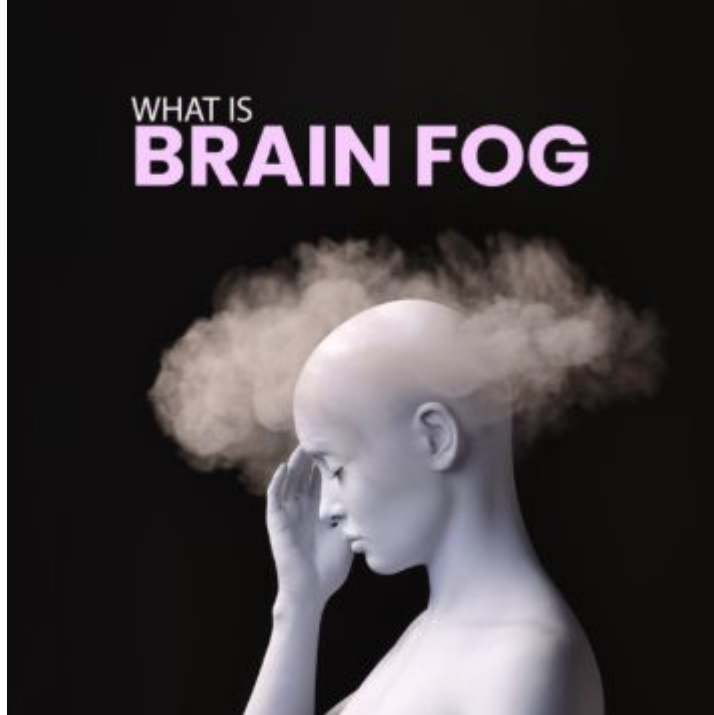


**'Helping teens with...'
Webinars for parents 2025/26**



- Worries and anxiety
- Digital wellbeing
- Understanding changes in the adolescent brain
- Exam anxiety
- Friendship difficulties
- Self esteem
- Low mood and depressive feelings





The acronym **SWANS** refers to key habits that support brain health and sharpen focus:

S for *sleep*

W for *water*

A for *activity*

N for *nutrition*

S for *stress*



Use of AI - Parent Information

Deputy Headteacher: Mr Goulbourne



The ever-changing world of AI



- AI is here and increasingly prevalent in the modern world.
- Many students are far more up to date with the use of AI tools than staff and/or parents/carers are.
- We need to strike the correct balance between educating our students on the use of AI, keeping them safe, ensuring that they are using AI tools in the correct way, and prepare them for the future world of work as best we are able to.
- We are working closely with Turing House and Orleans Park to ensure consistency of approach across schools in the local area.



How will students use AI?

- Students will be taught about the ethical considerations around AI in PDC lessons in Year 7 - these lessons will be offline lessons in a classroom.
- Students will be taught how AI tools work in computing lessons in Year 8.
- **The use of AI tools and issues around plagiarism:**
 - Students agree that they are NOT permitted to use AI tools to support with a piece of work unless they have been told that they can.
 - Students may ASK a teacher if they are permitted to use AI.
 - ALL use of AI tools must be referenced - **TRANSPARENCY**.



How will staff use AI?

- Staff are encouraged to use AI tools to reduce their workload (*e.g. support with lesson planning, producing quizzes, revision activities, admin etc.*).
- Staff are clear that they must maintain oversight - there is always a human being in control.
- Staff will be **TRANSPARENT** around the use of AI.
- Staff will ensure that no personal or private data is shared with AI models.
- If students wish to use AI tools staff will attempt to support this if possible.



Key Principles:

- Safety is the top priority
- AI is a great tool - needs human oversight
- Transparency



E Safety

smoothwall

- As part of our commitment to ensuring that we do all we can to keep our children safe online, the school uses monitoring software called Smoothwall.
- The software is linked to students' profiles and works both in school and at home on school managed devices.
- It supports students to enjoy their digital lives by monitoring the search/viewing information.
- The software flags the school if it identifies there is a potential risk of harm to students, allowing us to follow up promptly and act on any concerns.
- Filtering at school is through our firewall, just like at home via parental WiFi settings.



Key Dates

Date	Event
Year 11 - Throughout the year	End of Topic Tests
Year 11 Managing revision workshop (parent)	15 October 2025
Waldegrave Sixth Form Open Evening	16 October 2025
Year 11 Mock Exams	3 - 14 November (3 and 4 Nov is in the Oct HT)
Year 11 Monitoring	December 2025
Year 11 Parents Consultation meeting	10 December 2025
Year 11 Core mocks	February/March 2026
Year 11 Monitoring	March/April 2026
Year 11 Easter revision	During Easter holiday, details tbc
Year 11 Dress up Day	5 May 2026
Year 11 Final Celebration Assembly	6 May 2026
Year 11 Prom	25 June 2026



WALDEGRAVE SCHOOL

ENJOY • ACHIEVE • EMPOWER

Thank you for listening.
We wish you a safe journey
home

