

# SIXTH FORM AT WALDEGRAVE

ENJOY • ACHIEVE • EMPOWER



Waldegrave  
Sixth Form



# **Post-16 Options Evening**

# Post-16 Options

Post-16 options are...

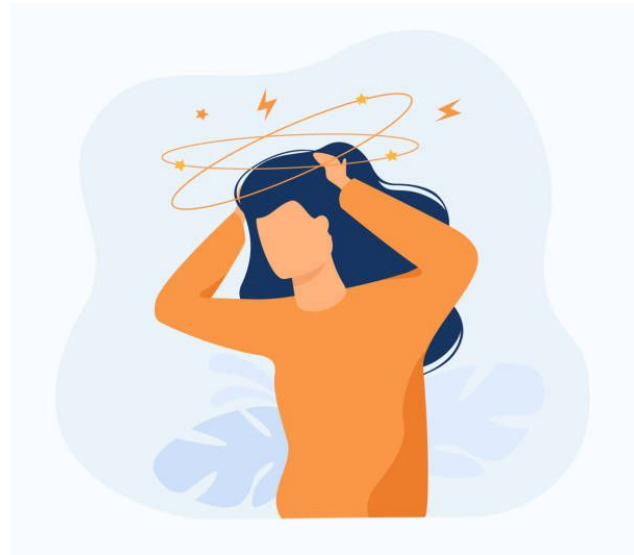
**...the range of educational opportunities  
available for students to move onto after  
the completion of their GCSEs**



Waldegrave  
Sixth Form

# Emotions

***Stressed***



***Nervous***

***Confused***



**Waldegrave**  
Sixth Form

# Current Position



*It doesn't matter whether students have given much consideration to their post-16 options at the moment. They are the start of a long journey towards the final decision and there will be lots of support available along the way. They do need to start thinking about it, but do not need to feel under any pressure.*

# Goal



*The goal when assessing post-16 options is for to decide on a route that matches their **personal** attributes, interests and aspirations.*

# Options

Similar subjects to your GCSEs and some new options. E.g. Social Sciences

Allows progression to university, apprenticeships and employment

Courses last two years

Academic qualifications that build on your GCSEs

## A Levels

Most student take three subjects, although some may do four

Mostly theoretical work in the classroom

Some practical work, especially in creative and performing arts

Mostly assessed through exams with some coursework, especially in creative and performing arts

# Options

Subjects related to specific industries. E.g.  
Accounting /  
Education /  
Engineering

Allows progression to university,  
apprenticeships and  
employment

Courses last two  
years

Practical qualifications  
that prepare you for  
work

## T Levels

Most students take  
one T Level (worth  
three A Levels)

80% of the course  
spent in the classroom  
developing knowledge  
and skills

20% of the course  
spent on a work  
placement doing  
practical work and  
building industry  
experience

Assessed through a  
mixture of exams and  
projects



# Options

Subjects related to specific industries. E.g.  
Social Care / Music  
Production / Visual  
Effects

Allows progression to university,  
apprenticeships and  
employment

Course length varies depending on the level of the qualification

Practical qualifications that prepare you for work

## BTECs

Most students take one BTEC, either on its own or alongside one or two A Levels

Mixture of theoretical and practical work in the classroom

Often make sure of specialist facilities and may include a work placement

Assessed entirely through coursework projects

# Options

Courses relate to a specific job. E.g. Hair and Beauty / Marketing

Combines formal qualifications with workplace experience

80% of the course spent in the workplace developing practical skills and experience

Allows progression to higher level apprenticeships and employment

## Apprenticeships

Course length varies depending on the level of the qualification

Most student will do one apprenticeship, which usually incorporates another formal qualification

20% of the course spent in college developing knowledge and skills

Assessed through exams, practical tests and projects

# Talking Points

What kind of careers **might** you be interested in?

Have you thought about which university courses you **might** be interested in after sixth form?

Which courses **might** you need to study to pursue your aspirations?

Which of your current subjects **might** you want to continue with after your GCSEs?

Which of your current subjects are you **likely** to do best in?

Which of your current subjects do you enjoy the most **at the moment**?

Are there any new subjects that you **think** you like the look of?

Have you **considered** BTEC options?

Do you think you **could** see yourself at Waldegrave Sixth Form?

Have you **considered** any other sixth forms / colleges?

Do **you** have any particular questions or concerns.

# Possible Worries

- Current mock exam results / predicted grades not meeting the entry requirements
- Final decisions on which sixth form / college they want to attend
- Definite choices on which A Level subjects they want to study
- Not having a clear idea of what they want to do after sixth form



**As long as students are starting to think about their post-16 options, there is no immediate rush to make any firm decisions**

# Support

There are lots of people both in and out of school who will be able to help students with assessing your post-16 options. They have been encouraged to speak to some of the following people:

- Parents / carers
- Older siblings
- Friends
- Form Tutor
- Subject teachers
- Head of Year
- Head of Key Stage
- Head of Sixth Form
- Careers Advisor



Whilst it is a good idea for students to gather the opinions of others, it is also important to remember that the final decision about what to do ultimately lies with them.

# Information

There are lots of resources available online to help you assess your post-16 options, including some created by the school. Some of these are listed below:

<https://www.waldegrave.richmond.sch.uk/1607/sixth-form-subjects> (A Level subjects on offer at Waldegrave)

<https://nationalcareers.service.gov.uk/careers-advice/career-choices-at-16> (National Careers Service guidance on post-16 options)

<https://www.ucas.com/further-education/post-16-qualifications> (Post-16 options advertised on UCAS)

<https://www.tlevels.gov.uk/> (Government website on T Levels)

# Events

<b>Post-16 Options Assemblies</b> (April 2024)	<b>Post-16 Options Evening</b> (April 2024)	<b>Y10 Sixth Form Showcase</b> (July 2024)
<b>Apprenticeship Talk</b> (September 2024)		<b>Careers Guidance Interviews</b> (Ongoing)
<b>Sixth Form Applications Assembly</b> (October 2024)	<b>Sixth Form Open Evening</b> (October 2024)	<b>Y11 Sixth Form Taster Day</b> (July 2025)

***Please note that other schools / colleges will also be running their own open events, which you may also choose to attend***

# Sixth Form Vision

At Waldegrave Sixth Form our vision is to ensure our students enjoy a love of learning, achieve their aspirations and feel empowered to become the leaders of, and contributors to, a better society.



Waldegrave  
Sixth Form



# Key Features

- Outstanding teaching
- Personalised tutoring
- Academic mentoring
- Assessment & monitoring
- Support meetings
- Enrichment programme
- Student leadership
- UCAS support
- Excellent results
- Impressive destination



# Facilities

- Sixth Form building
- Extensive IT resources
- Specialist science labs
- Sixth Form Cafe
- Creative and performing arts spaces
- **New** Sixth Form Learning Centre



# Facilities



Waldegrave  
Sixth Form

# Facilities





# Facilities



**Waldegrave**  
Sixth Form

# Facilities



# Facilities



Waldegrave  
Sixth Form



# Facilities



Waldegrave  
Sixth Form



# Facilities



**Waldegrave**  
Sixth Form

# Course Choices

- Vast majority study three subjects over two years
- Possibility of four subjects in exceptional cases. E.g. native speaker of a language / talented musician / strong overall academic profile
- Asked to identify subjects on their initial applications
- Final decision not made until enrolment

# A Level Courses

**Art, Craft and Design**

**Biology**

**Chemistry**

**Drama and Theatre Studies**

**Economics**

**English Literature**

**Fashion and Textiles**

**French**

**Further Maths**

**German**

**Geography**

**Government and Politics**

**History**

**Mathematics**

**Media**

**Music**

**PE**

**Photography**

**RS: Philosophy and Ethics**

**Physics**

**Psychology**

**Sociology**

**Spanish**



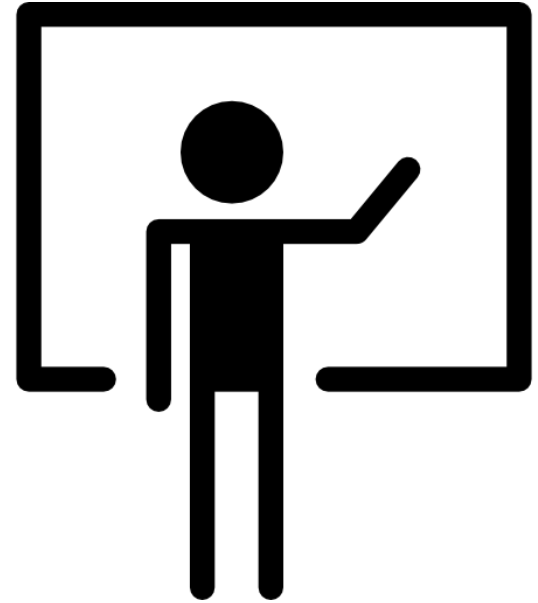
**Waldegrave**  
Sixth Form

# Entry Requirements

Subject	Grade	Subject	Grade	Subject	Grade
Art	6 in Art	Further Maths	8 in Maths	RS	6 in RS
Biology	6 in Biology if taking Triple Science 66 if taking Combined Science	Geography	6 in Geography	Photography	5 in Art or 5 in D&T
Chemistry	6 in Chemistry if Taking Triple Science 66 if taking Combined Science	German	6 in German	Physics	6 in Physics if taking Triple Science 66 if taking Combined Science + 7 in Maths
Drama	6 in Drama + 6 in English	Government & Politics	5 in English Language + 5 in English Literature	Psychology	5 in English + 5 in Maths
Economics	5 in English + 5 in Maths	History	6 in History	PE	5 in PE or 5 in Biology
English Literature	6 in English Language + 6 In English Literature	Maths	7 in Maths	Sociology	5 in English + 5 in Maths
French	6 in French	Media Studies	5 in English Language + 5 in English Literature	Spanish	6 in Spanish
Fashion & Textiles	6 in Art or 6 in D&T	Music	6 in Music + grade 5 instrument		

# Lessons

- 9 lessons per subject each fortnight
- High quality teaching
- Varied styles of learning
- Subject specialist staff
- Engaging and interactive
- Regular assessment and feedback
- Supported by Google Classroom



# Tutor Time

- Tutor Time every day from 08.35 to 08.55
- Wide variety of purposeful and enjoyable activities
- Opportunity for students to get to know people outside of the subjects they are studying
- Chance to seek advice or support from their Form Tutor.
- Compulsory for all students to attend

Day	Focus
Mon	Student Presentations
Tues	Current Affairs
Wed	PDC (Content)
Thurs	Assembly
Fri	Fun Activity

# Work Periods

- Approximately 20 work periods per fortnight
- Intentionally referred to as work periods
- Students expected to be productively engaged in independent learning
- Access to a variety of study spaces
- Some flexibility to work from home



# Enrichment

- Compulsory programme of activities
- Alternating Wednesday afternoons
- Different focus for each term
- Opportunity for enjoyment, building friendships and developing skills

Autumn Term
All students participate in activities organised and run within school. These include recreational sports and subject sessions that extend beyond the normal curriculum.
Spring Term
All students participate in some form of volunteering, either within school by supporting lessons with younger students, or outside of school with a local charity
Summer Term
The priority in the final term will be emotional wellbeing and academic achievement in the build up to exams. After exams, the focus will be on post-18 options



# Support Systems



# Post-18 Options

- Employer encounters
- Taster lectures
- Tutor Time focus
- University trips
- UCAS briefings / workshops
- Apprenticeship focus sessions
- Careers guidance interviews
- Impressive destinations

The logo for UCAS, featuring the letters 'UCAS' in a bold, sans-serif font. The 'U', 'C', and 'S' are black, while the 'A' is a bright red triangle pointing upwards.

# Results

	Results 2019	Results 2020	Results 2021	Results 2022	Results 2023
A*	13%	19%	22%	24%	11%
A*-A	42%	51%	55%	53%	44%
A*-B	71%	78%	84%	80%	71%
A*-C	89%	95%	94%	93%	88%



**Waldegrave**  
Sixth Form

# Destinations

Last year, 72.99% of students achieved places at their firm choice universities and 45.40% earned places at Russell Group universities.

- 3 Oxbridge
- 1 Medicine
- 2 Veterinary Science
- 6 Art Foundation

We have also had students gain places on degree apprenticeship schemes, including with Deloitte and Unilever

# Applications

- Applications open in October 2024
- Deadline in January 2025
- Open Evening on Thursday 24 October 2024
- Students advised to apply to at least three schools / colleges
- Applications to Waldegrave Sixth Form are made through Applicaa
- Separate applications are required for each school / college
- Students asked to identify subjects they want to study on their initial applications
- Final decisions not made until Enrolment Day
- Applicants may be invited to an Information, Advice & Guidance Meeting
- Enrolment Day on GCSE Results Day for internal applicants and the following day for external applicants
- Please avoid booking holidays

# Oversubscription Criteria

- Approximately 200 places
- Internal applicants first
- External applicants follow
- Enrolment appointments based on distance
- Oversubscription Criteria published in full on website
- Conditional offers are not guarantees of a place
- Places are not confirmed until enrolment has been completed



# Questions



Waldegrave  
Sixth Form